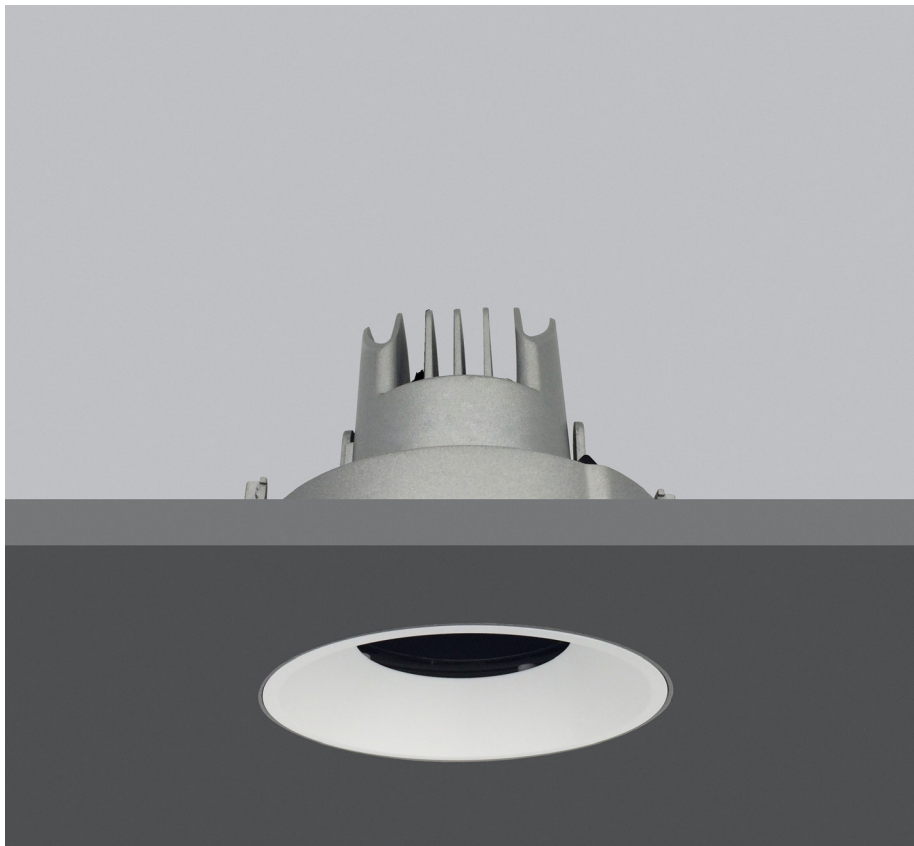


SCULPTORIS TRIMLESS

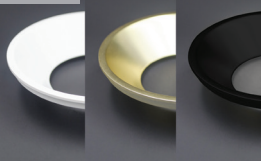
SOLUTIONS D'INTÉRIEUR | ENCASTRÉS ORIENTABLES
INSIDE SOLUTIONS | RECESSED ADJUSTABLE



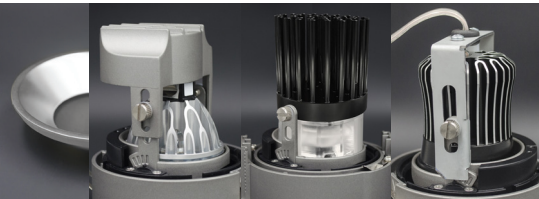
DOWNLIGHT ENCASTRÉ *RECESSED DOWNLIGHT*



*Fixation plafond avec hauteur variable (5->60 mm)
Ceiling fixation with an adjustable height (5->60 mm)*








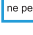


*Réflecteur blanche, noire, argent, or MR16
(custom sur demande)
White, black, silver, gold front cover
(custom on request)*



ARA


SLE16

secante |        

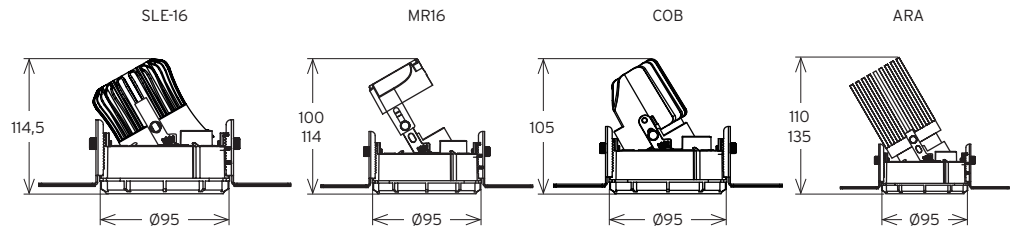
Ce luminaire comporte une lampe à LED intégrée.

LED

La lampe de ce luminaire ne peut pas être changée.

874/2012 

SCULPTORIS TRIMLESS



Dimensions en mm
Sizes in mm

DONNÉES TECHNIQUES DATASHEET

TYPE	SOURCE	Dimension en mm Size in mm	Hauteur plénum en mm Plenum Height	Type	Courant max Max current	Lm max	Puissance max Max Power	Température Temperature						
S C U L P T O R I S T R I M L E S S	MR16	H min. : 100 H max. : 114 Ø95	-	LED	MR16 300 mA	MR16 456 - 544 lm	MR16 8 W	2700, 3000°K 4000°K						
	SLE-16	H max. : 114,5 Ø95			SLE-16 290 mA (8,1W) 440 mA* (12,2W)	SLE-16 435 - 480 lm (8,1W) 680 - 755 lm (12,2W)	SLE-16 8,1 W 12,2 W	2700, 3000 4000°K						
	COB	H : 105 Ø95			COB 180 / 500 mA (8W) 700 mA (10W) 280 mA (12W)	COB 38 - 57 lm/W (8W) 41 - 45 lm/W (10W) 39 - 56 lm/W (12W)	COB 8 W 10 W 12 W	2700, 3000 4000°K						
	OPTION ARA50 SMALL	H : 110 Ø95			OPTION ARA50 SMALL 500 mA (6W) 900 mA (11W)	OPTION ARA50 SMALL 550 lm (6W) 800 lm (11W)	OPTION ARA50 SMALL 6 W 11 W	2700, 3000 4000°K (3500°K OPTION)						
	OPTION ARA50 BIG	H : 135 Ø95			Sur demande On demand ARA50 BIG 1050 mA	Sur demande On demand ARA50 BIG 1000 lm	Sur demande On demand ARA50 BIG 13 W							
		Classe Class	IP IP	IK IK	IRC CRI	R-9 / Haute précision chromatique R-9 / High chromatic precision	Module LED haute efficacité HI-efficacy LED module	Économie d'énergie Eco energy saving	Dali ou 1/10V - DMX (a) Dali or 1/10V - DMX	Luminaire froid Cold luminaire	Auto dissipateur Auto heatsink	IES ou LDT IES or LDT	Lentille Lens	Orientation Steerable
	MR16	3	20	07	95	95	●	●	●	●	(b)	10, 25 36°	30° (V) 355° (H)	
	SLE-16				95	> 90	●	●	●	●		10, 15 25, 36° *		
	COB				> 90	-	●	●	●	●		9, 15 25, 30 36° *		
	OPTION ARA50 SMALL													
	SUR DEMANDE ON DEMAND ARA50 BIG				> 95	> 50	●	●	●	●		●		10, 23 32°
	Appareil fournis hors alimentation (sauf COB) Without driver (but the COB)				(a) DALI ou 1-10V / DMX en fonction du driver - DALI or 1-10V / DMX based driver (b) Sur demande - On request									
OPTION	Grille nid d'abeille Honeycomb grid	Optique givrée Frosted optic	Réflecteur noir, blanc, argent, or (custom sur demande) Black, white, silver collar, gold (custom on request)						Lentille pour ARA 6, 8, 14° Lens for ARA 6, 8, 14°					
Snap pour ARA, SLE-16 et MR16 : 25, 36, 60° Snap for ARA, SLE-16 and MR16 : 25, 36, 60°		Snap pour ARA, SLE-16 et MR16 : 1/4, 1/2, 3/4, custom CTO Snap for ARA, SLE-16 and MR16 : 1/4, 1/2, 3/4, custom CTO							Ouverture dans plafond Ø98mm Ceiling opening : Ø98mm					

* Différent selon la puissance / Different depending on the power

Durée de vie entre 35000 et 50000H selon source / Lifespan between 35000 and 50000H according to source

Update 03/2018

* 440mA max. pour 15° et 36°, 300mA max. pour 10° / 440mA max. for 15° and 36°, 300 max. for 10°

